

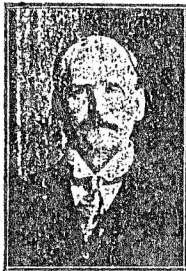
Erwin con't

same freedom of political or religious opinion which he himself enjoys. As an officer he is approachable and obliging. As a friend he is kind and sincere. As a man he is honest and upright. By his efficiency to the office of Circuit Clerk which he now holds and his pure and noble life and example Crawford S. **Erwin** is an ideal citizen. He was re-elected November 6th last by an overwhelming majority and should he again be a candidate the outcome would be the same.

---

John A. **Bateman**

County Clerk



John A. **Bateman** has proven to be the best county clerk this county has had for many years. We might claim him as a native of this county for he was born just over the line in Richland County September 20, 1864 and moved into the county with his parents at the age of four. He is certainly a self-made man and all he has or is today he owes to no one but himself and his own honest efforts to succeed, for when but 15 years of age he was left fatherless and in reverse circumstances, the whole dependence of the family falling upon his youthful shoulders and then again when he was but 5 years of age he was injured with a mowing machine and left a cripple for life, and under all of these obstacles he began his life's struggle, "when most children have nothing but their own pleasures to bother them", and he has succeeded well. Just go over to the courthouse and converse with him a few moments and you will discover that with all of the difficulties under which he was laboring, he has secured a good education and is now in comfortable circumstances.

His early education was obtained in the common district schools, this being supplemented by a course in the Haywood College and then a two term course at the Richland, Indiana College. He began teaching school at the age of 22 and stayed at it five years. He started the first furniture store in Sailor Springs and was also engaged in the real estate and insurance business in that town, as well as making a considerable amount of money by buying wool and grass seed.

His first advent into the political field was as assessor of Pixley Township, an office which he filled with credit. He was also first mayor of Sailor Springs and was elected county clerk in 1898. He has always been a staunch republican in